



MINIMIZE YOUR ENVIRONMENTAL IMPACT
WHILE MAXIMIZING YOUR OPERATIONS

ENVIRONMENTAL CONTAINMENT, WATER TREATMENT AND SITE ACCESS SOLUTIONS

PRODUCTS & SERVICES

- Environmental Lining
- Above Ground Storage Tanks
- Secondary Containment
- HDPE Pipe Services
- Water Treatment
- Remote Leak Detection and Water Quality Monitoring
- Composite Construction Mats
- Temporary Bridges



GEOSYNTHETIC LINING SOLUTIONS

EXPERIENCE BUILT BY THE BILLIONS.

With over 1.7 billion square feet of liner installed, Mustang Extreme Environmental Services is one of the most experienced and capable environmental lining companies in the business. We excel in the installation of systems for upstream and midstream oil and gas, coal ash, solid waste landfill, mining, and agricultural applications. Our significant buying power and commitment to reinvestment in our inventory makes it possible for us to consistently meet our customers' requirements and deploy material faster than our competitors.

MATERIALS INSTALLED:

- 20, 30, 40, 60, 80 and 100 Mil HDPE and LLDPE Geosynthetic Membrane
- Geosynthetic Clay Liner (GCL)
- ClosureTurf®
- LiteEarth™
- Geocomposite
- Geosynthetic Textile
- Geonet
- Wind Defender® Ballast Systems
- PVC

APPLICATIONS:

- Produced Water and Freshwater Impoundments
- Wastewater Lagoons
- Solid Waste Management
- Flowback and Produced Water Ponds
- Reserve Pits
- Moisture Barriers
- Soil Remediation Pads
- Landfill Caps
- Floating Covers
- Liner Repairs



Oil & Gas



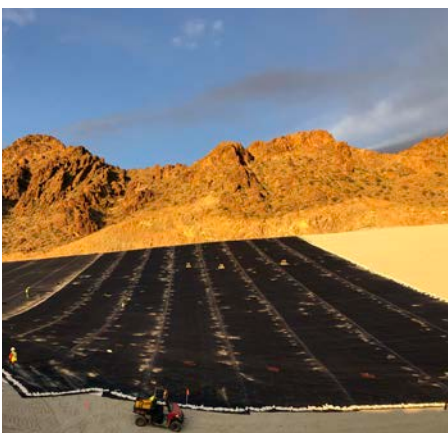
Agriculture



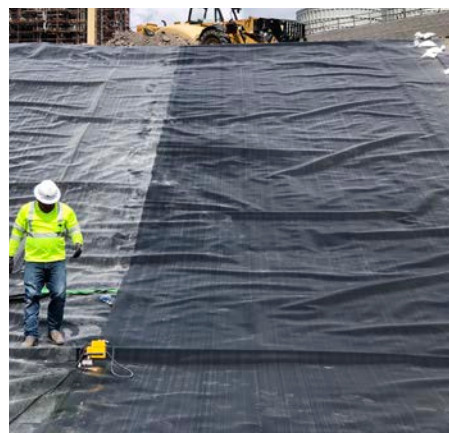
Coal Ash



Landfill



Mining



Power Generation



Farm and Ranch Ponds

ENVIRONMENTAL SERVICES

A FULL SUITE OF CONTAINMENT PRODUCTS AND SERVICES



SECONDARY CONTAINMENT

We offer a range of top-quality secondary containment options to meet the specific requirements of individual operations. Our crews have installed systems in all terrains and ground conditions, ensuring compliance with state regulations. Our systems and installations are quality controlled and quality assured to meet the Occupational Safety and Health Administration (OSHA) standards.

- Steel Wall Systems
- Plastic Modular Systems
- Prefab Liners
- Polyurea Spray Liner
- Drive-over Systems
- Tank Pads



ABOVE GROUND STORAGE TANKS

Our fast-deploy, portable above ground storage tanks help operations get up and running faster, saving time, manpower and money. Traditional water supplies require countless truck trips to meet demand and in-ground systems can take months to complete. Our tanks have a huge storage capacity, relatively small footprint, and can be up and running in a few days. Aeration and remote water monitoring can be added to meet water management requirements and to help improve operational efficiencies. 10,000 BBL to 80,000 BBL capacities available.



HDPE PIPING AND FABRICATION SERVICES

With our extensive background in industrial plastics and experience across numerous industries and terrains, we have the expertise to fabricate and install everything from interconnects to "stingers." We also design, fabricate, and install HDPE piping infrastructure such as manifolds, spools, suction/ discharge lines and more. Our team has a proven track record of completing projects in the most challenging environments on time and on budget.



CUSTOM HEATER HUTS

Protecting sensitive equipment from extreme weather and cold can reduce the risk of costly repairs. Our full-service heater hut installations are customized to each job site with minimal disruption to your operations.

WATER TREATMENT AND MANAGEMENT SOLUTIONS

CUSTOMIZED, SCIENCE-BASED SOLUTIONS FOR WATER MANAGEMENT AND TREATMENT

We offer a wide range of systems and services designed to manage, improve, and maintain the quality and readiness of stored water to ensure it meets your operation's specific needs. Our water treatment technicians have treated more than 600 million gallons of produced water for recycle and reuse. We provide treatment solutions for water during each stage of your operation:

- Aeration systems custom-designed to help reduce operational costs, limit potential downtime, and ensure the readiness and longevity of your stored water.
- Remote water quality monitoring and leak detection systems that minimize manpower and time needed for manual testing, helping streamline operations and control costs.
- Treatment of produced water for recycle/reuse facilities for water entering long-term or short-term storage infrastructure.
- Bulk water treatment for water stored in above ground tanks or ponds.
- On-the-fly services to treat water during movement toward end use applications and anywhere in-between.

WATER TREATMENT SYSTEMS AND SERVICES



Aeration and Chemical Injection



Automated Chemical Injection



M.E.G.A Remote Water Monitoring System



M.E.G.A Remote Leak Detection System



Oil Skimming



On-the-Fly Water Treatment



Pipeline Cleanout



Recycle and Reuse

SITE ACCESS SOLUTIONS



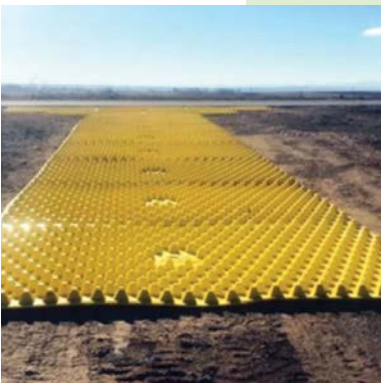
COMPOSITE MATS

Engineered for superior performance in the most extreme and challenging ground conditions, our composite construction mats are a safe, stable alternative to traditional wood mats.

With an inventory of 27,000 mats, Mustang Extreme has one of the largest composite mat rental fleets in the U.S. with storage yards strategically placed along the east coast and gulf south for fast deployment. We also offer turnkey installation and removal services by our veteran crews with over 20 years of field experience.

Applications include:

- Temporary Roadways
- Work Platforms
- Staging Areas
- Liner Protection



FODS TRACKOUT MATS

Designed to eliminate the tracking of mud and sediments outside of work sites, FODS trackout mats are an alternative to rock, making them ideal for construction, airports, government, military, oil and gas, roads and bridges, renewable energy, telecommunications, national parks, storm water, pipeline, utilities, mining, agriculture and more.



FAST-DEPLOY, ENGINEER-RATED, PREFABRICATED TEMPORARY BRIDGES

Our fast-deploy, engineer-rated temporary bridges can handle spans up to 62 feet. Prefabricated and designed for easy transport, they can be installed in less than a day. Engineered to safely support heavy-duty vehicles and equipment over stream beds, waterways, and channel crossings with minimal disturbance to stream beds and wetlands, they are ideal for environmentally sensitive and hard-to-access job sites.

HELPING BUILD A HEALTHIER, CLEANER PLANET

Environmental, Social and Governance (ESG) is a core focus of Mustang Extreme, influencing every aspect of our operations – from running a transparent and professional business, to our emphasis on best-in-class health and safety training for our team members.

