



STATEMENT OF QUALIFICATIONS

ENVIRONMENTAL LINING SERVICES



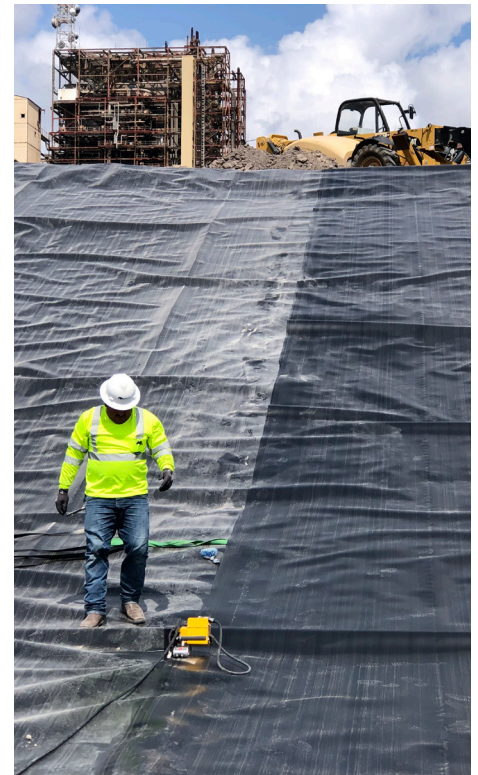
EXPERTS IN THE INSTALLATION OF GEOSYNTHETIC CONTAINMENT SYSTEMS

With more than 2 billion square feet of geosynthetic liner installations completed and a team that brings together over 300 years of combined experience, Mustang Extreme is a trusted partner for mission-critical environmental containment projects.

Our team includes highly skilled professionals with deep expertise across all aspects of geosynthetic liner systems, including:

- Operations and construction management
- Field supervision and project management
- Geosynthetic material technical services, testing and support
- Installation, welding, and seam integrity testing
- Quality assurance, quality control, and conformance testing
- Health, safety, and environmental compliance
- Supervision of large-scale, multi-crew field operations across diverse industries

Each crew we deploy is staffed with veteran professionals who have rigorous training, safety certifications, and a track record of delivering results on time and on budget.



INDUSTRIES:

- Agriculture
- Aquaculture
- Coal Ash
- Landfills
- Mining
- Oil and Gas
- Power Generation
- Ranch and Farm Ponds
- RNG
- Pot Ash

MATERIALS INSTALLED:

- 20, 30, 40, 60, 80 and 100 Mil HDPE and LLDPE Geomembrane
- Geosynthetic Clay liner (GCL)
- ClosureTurf®
- LiteEarth™
- Geocomposite
- Geosynthetic Textile
- Geonet
- Wind Defender® Ballast Systems
- Floating Covers
- PVC

APPLICATIONS:

- Produced Water and Freshwater Impoundments
- Wastewater Lagoons
- Solid Waste Management
- Flowback Ponds
- Reserve Pits
- Moisture Barriers
- Soil Remediation Pads
- Landfill Caps
- Floating Covers
- Anaerobic Digesters and Methane Capture
- Brine Ponds
- Evaporation Ponds
- Retention and Detention Ponds
- Sediment Ponds
- Stormwater Management Ponds
- Liner Repairs
- Evaporation ponds
- Ornamental and Recreational Ponds
- Brine ponds
- Ash ponds
- Tailings ponds
- Heap leach pads
- Leachate ponds
- Fish hatcheries and ponds

REPRESENTATIVE CUSTOMERS AND PROJECTS

LANDFILL - MORE THAN 20 MILLION SF INSTALLED

PROJECT	MATERIALS INSTALLED
Davis County Landfill Phase 4 Cell and Phase 5 Cap Layton, UT	GCL, 60mil HDPE Double-Sided Textured, 8 oz. 250mil Geocomposite
OWL Lea County Landfill Cell Jal, NM	GCL, 60mil Smooth HDPE, 60mil Textured HDPE, Double-Sided Geocomposite, Single-Sided Geocomposite, Geonet, 40mil Smooth HDPE
SR 85 Landfill Cell 1 Phase 5	GCL, 60mil HDPE Smooth, 10 oz. 250mil Geocomposite
Tangipahoa Parish Government Landfill Cover Independence, LA	60mil Green Liner
Rappahannock Regional Solid Waste Board Cell G1 and G3 Stafford, VA	GCL, 60mil HDPE Double-Sided Textured, 16 oz. Geotextile, 6 oz. Geotextile, 200mil Geocomposite, 12mil Rain Cover
Mundy Landfill Improvements Cell X Construction Mansfield, LA	60mil HDPE Double-Sided Textured, 200mil Double-Sided Geocomposite, Non-Reinforced, Reinforced GCL
DTG Yakima Yakima, WA	60mil Textured HDPE, GCL, 16 oz. Non-Woven Geotextile, Studded Geomembrane Liner
Augusta Regional Landfill Cap Staunton, VA	GCL, Double-Sided Textured 60mil HDPE, 10 oz. 250mil Double-Sided Textured Geocomposite, 16 oz. Textile, 12mil Reinforced Single-Sided, 40mil Double-Sided Textured LLDPE, 300mil Double-Sided Textured 8 oz. Textile
GFL Union County Landfill Cell 14A El Dorado, AR	Double-Sided Drainage Geocomposite, 40mil LLDPE, GCL
Hunter Ferrell Landfill Irving, TX	750,000 SF 60mil Textured HDPE, 750,000 SF Double-Sided Geocomposite



Altamont Landfill, Livermore, CA



Mundy Landfill, Mansfield, LA



Tangipahoa Landfill, Independence, LA

AGRICULTURE / AQUACULTURE - MORE THAN 16 MILLION SF INSTALLED

Texas Parks and Wildlife Division Fish Hatchery Pond Relines South Texas	More than 50 ponds lined using over 3 million SF of geosynthetic liner
MJE LLC. Agriculture Wastewater Lagoons NE, TX	80 oz. Standard Black Textile, 60mil HDSmooth Black
Chicken Farm Pond Liner Douglas, GA	100mil HDSmooth Black Nominal, 10 oz. Standard Black Textile, Wind Defender
Seaboard Foods Biogas Collection Ponds OK	60mil Black Smooth Average, 8 oz. Textile, 200mil GeoNet

MINING - MORE THAN 19 MILLION SF INSTALLED

Morenci Silver Basin Mine Ph. 3 Morenci, AZ	80mil LLDPE DST, HDPE Liner, 16 oz. Non-Woven Geotextile, 80mil DST HDPE Liner
Golden Vertex Heap Leach Pad 2B and 3A Bullhead City, AZ	80mil LLDPE DS Liner, 80mil HDPE Liner, 60mil HDPE Microdrain Liner, 80mil Textured HDPE, GCL
Haile Mining Operation West PAG OSA Stage 1 Kershaw, SC	80mil Double-Sided Textured Geomembrane, 10 oz. Geotextile, Geonet
Haile Mining Operation 541 Pond Kershaw, SC	80mil Double-Sided Textured, Geomembrane, Geonet, 10 oz. Geotextile, 8-200-8 Geocomposite
Sibanye-Stillwater Waste Dump Liner MT	80mil Textured HDPE, Geocomposite
Origin Mine Golden Valley, AZ	80mil Smooth HDPE, 80mil Textured HDPE, 60mil Smooth HDPE, 80mil Smooth HDPE
Phoenix Industrial Origin Mine Golden Valley, AZ	262,000 SF 80mil Smooth HDPE, 7,000 SF 60mil Smooth HDPE
BAP Pond 8B Boron, CA	GCL, 60mil Smooth White Conductive Geomembrane, 200mil Geonet, 80mil Single-Sided Textured White Conductive Geomembrane, Double-Sided Geocomposite, 60mil Textured White Conductive Geomembrane

COAL ASH, BRINE PONDS, ENERGY WASTE - MORE THAN 16 MILLION SF INSTALLED

San Miguel Electric Co-op - Ash Pond Jourdanton, TX	60mil Single-Sided HDPE
Ash Pond Southeastern, U.S.	GCL, Geotextile, 60mil Textured HDPE, Rain Tarp, 60mil HDSmooth White Nominal, GeoNet 250mil Smooth Black
Salt Dome Brine Pond South Texas	GeoComposite 200mil (220) SST Black 8 oz., 60mil HDSmooth Black Average Conductive, GeoNet 200mil Smooth Black, 60mil HDSmooth White Average, 60mil HDSST White GRI Conductive
Wasco County Energy Waste Landfill The Dalles, OR	GCL, 60mil Textured HDPE Double-Sided Geocomposite, Geomembrane, 16 oz. Non-woven Geotextile, 8 oz. Non-woven Geotextile



Morenci Silver Basin Mine, Morenci, AZ



RNG Containment, OK



San Miguel Lignite Power Plant, Jourdanton, TX

MUSTANG EXTREME HAS COMPLETED MULTIPLE LANDFILL PROJECTS FOR WMI, INSTALLING MORE THAN 31 MILLION SQUARE FEET OF LINER:

WMI LANDFILL PROJECTS	MATERIALS INSTALLED
Altamont - Phases 4 and 5 Livermore, CA	60mil HDPE Liner, 12 oz. Geotextile GCL, Geocomposite, LCRS Geocomposite, 1 oz. Geotextile
Antelope Valley - Phase V-B Palmdale, CA	GCL, 60mil HDPE DST Liner, 60mil HDPE SST Liner, Geocomposite
Columbia Ridge Arlington, OR	GCL, 60mil HDPE Primary Liner, 60mil HDPE Secondary Liner; Geocomposite
El Sobrante Corona, CA	60mil Double-Sided Textured HDPE, 40mil Double-Sided Textured HDPE, GCL, 12 oz. Geotextile, 8 oz. Geotextile, 8mil Raven BBR, Wind Defender
Graham Road Medical Lake, WA	60mil HDPE Liner and GCL, 16 oz. Nonwoven Geotextile, Double-Sided Geocomposite
Hillsboro Landfill Cap and Cell Hillsboro, OR	GCL, Geocomposite, Geotextile and HDPE Liner, 60mil HDPE Liner, 8 oz. Nonwoven Geotextile, and Double-Sided Geocomposite
Howard County Big Spring, TX	GCL, 60mil HDPE Liner, 60mil DST Liner, Geonet, Double-Sided Geocomposite, Single-Sided Geocomposite, 30mil Liner
Lancaster LA County, CA	GCL, 60mil DST HDPE Liner, 60mil SST HDPE Liner, 12 oz. Geotextile, 8 oz. Geotextile, 16 oz. Geotextile
Marana Module 2A Marana, AZ	GCL, 60mil HDPE Double-Sided Textured, Geocomposite, 16 oz. Geotextile
Northwest Regional - PH2 Mod 7 Surprise, AZ	GCL, 60mil DST HDPE Liner, SS Geocomposite, 16 oz. Geotextile
Orla Cell 3 Orla, TX	60mil Double-Sided Textured HDPE, GCL, Geonet, Double-Sided Geocomposite, Single-Sided Geocomposite, 10 oz. Nonwoven Geotextile
Simi Valley Simi Vally, CA	GCL, 80mil HDPE, Geocomposite, 16 oz. Geotextile, 8 oz. Geotextile, UV Protective Layer, 60mil HDPE and GCL, 6 oz. Nonwoven Geotextile, 60mil Single-Sided Textured HDPE, Single-Sided Geocomposite, 80mil HDPE Textured, 8 oz. Nonwoven Geotextile, 16 oz. Nonwoven Geotextile, and 12mil Raven DuraSkrim and Wind Defender



COMPLEMENTARY SERVICES



SECONDARY CONTAINMENT SYSTEMS

We offer a range of secondary containment options to meet specific requirements of individual operations. Our crews are experienced in installing systems in all terrains and ground conditions and are familiar with compliance and state regulatory requirements. Options include steel wall systems, plastic modular systems, tank pads, drive over systems, prefabricated liners and polyurea spray-in liner.



ABOVE GROUND STORAGE TANKS

Our fast-deploy, portable above ground storage tanks help operations get up and running faster. Our tanks have capacities up to 46,000 BBL and can be up and running in a few days. Aeration and remote water monitoring can be added to meet water management requirements and improve operational efficiencies.



HDPE PIPE SERVICES

We have the expertise to fabricate and install everything from interconnects to "stingers." We also design, fabricate, and install HDPE piping infrastructure such as manifolds, spools, suction/discharge lines and more.



WATER TREATMENT SOLUTIONS AND SERVICES

Mustang Extreme's water treatment division provides customized, science-based solutions to manage, improve, and maintain the quality and readiness of stored water. These services include water treatment, remote water monitoring, and custom aeration systems with chemical injection.



COMPOSITE SITE ACCESS MATS

Engineered for superior performance in the most extreme and challenging site conditions, our heavy-duty composite construction mats provide a safe, stable, and eco-friendly solution for temporary roadways, right-of-way access, staging areas, work platforms and geosynthetic liner protection. We offer turnkey installation and removal services

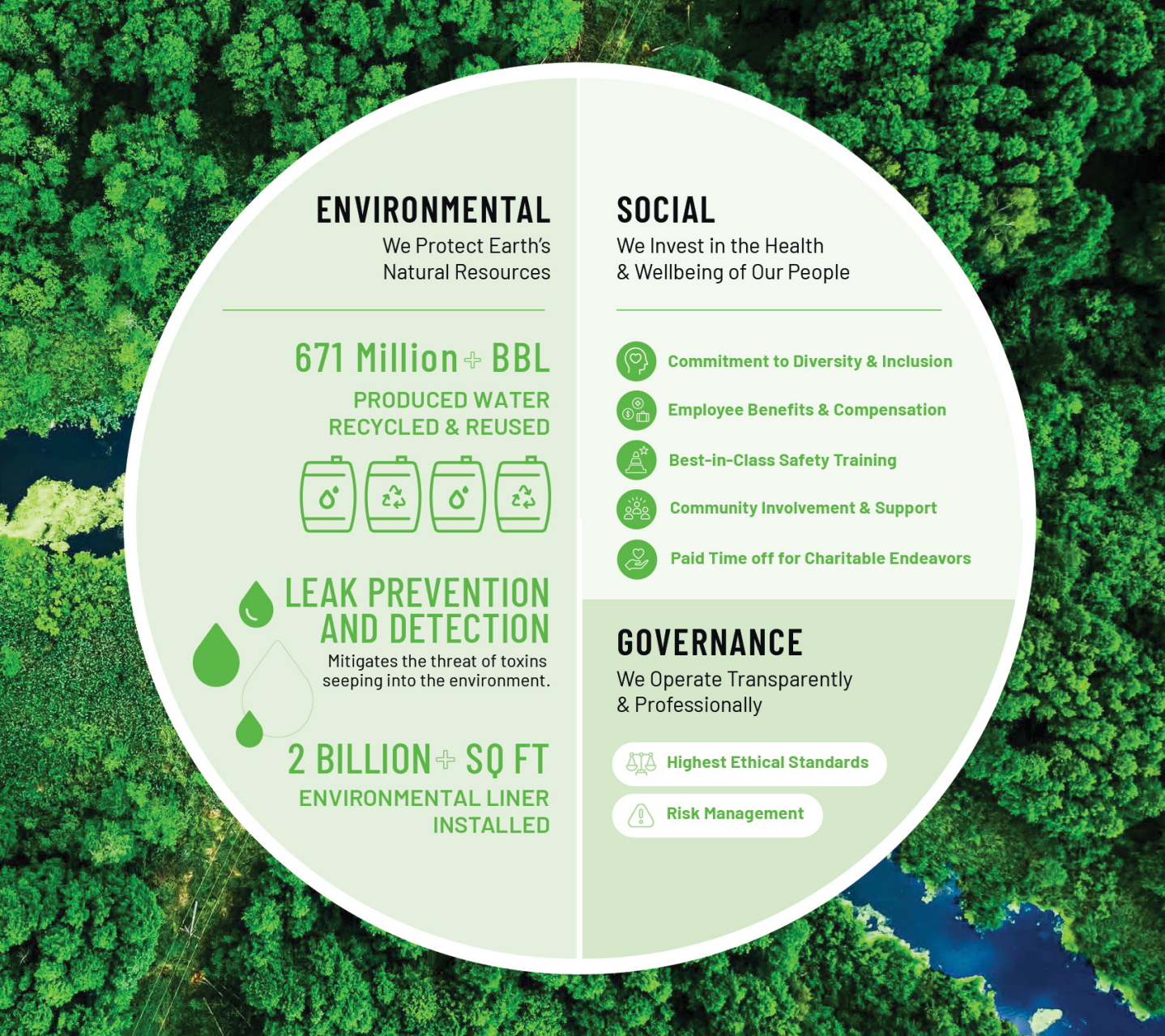


TEMPORARY PREFABRICATED BRIDGES

Our fast-deploy, engineer-rated temporary bridges offer an ideal solution for gaining access to difficult to reach job sites. Able to cover spans up to 60', these can be installed in less than a day with a small crew.

ENVIRONMENTAL, SOCIAL AND GOVERNANCE (ESG)

ESG is a core focus of Mustang Extreme, influencing every aspect of our operations – from running a transparent and professional business to our emphasis on best-in-class health and safety training for our team members.





HEALTH AND SAFETY ARE TOP PRIORITIES

We instill a safe environment and attitude in all the work we do. Each Mustang Extreme employee is aware they have the right and responsibility to stop any unsafe act or situation. That’s why we’ve incorporated a Behavioral Based Safety (BBS) program involving hazard identification and near miss reporting. We make safety the control, not the variable. We owe this to our employees, our customers and the communities in which we operate.

YEAR	TRIR	EMR	MAN HOURS
2024	.80	.78	753,545
2023	.24	.78	822,404
2022	.99	.93	808,862
2021	.98	.86	610,258



EMPLOYEE PREPAREDNESS

All new hires receive best-in-class training, including PEC Safeland, PEC H2S Clear and Annual Safety Retraining and many of our team members are Certified Rigging Inspectors through the National Commission for the Certification of Crane Operators (NCCCO).

We adopt the most stringent and demanding safety standards as daily practice. This allows us to work anywhere knowing that we are safe and compliant with our customers’ expectations. Mustang Extreme is registered with PEC, Avetta, NCMS, ISNetworld and TPS Alert.



REFERENCES

Donnie Schwahn - Ames Construction, Inc.

- 602.431.2111
- donnieschwahn@amesco.com

Jarel Yantes - BH, Inc.

- 435.789.5252
- jarel@bhico.com

Joseph Sulesky - Centec Engineering, PLLC

- 304.894.6427
- jsulesky@centec-engineering.com

Eric Halfmann, P.E. - Engineer Manager San Miguel Electric Cooperative, Inc. - Jourdanton, TX

- 325.669.0577
- ehalfmann@smeci.net

Curt Jacobs - Stillwater Mining Co.

- 406.328.8573
- curt.jacobs@sibanyestillwater.com

Ron Lippincot - Construction Manager Stillwater Mining Co. Nye, MT

- Office: 406.328.8594
- Cell: 602.384.7110
- www.sibanye-stillwater.com

Jason Larchar - Milestone Environmental Services, LLC - McCamey, TX

- 281.794.0598
- JasonLarchar@milestone-es.com

Randal Holdeman - Unruh Excavating

- 620.345.3366
- randal@unruhexcavating.com

Melody A. Adams - PNW/BC Area Project Manager WMI - Portland, OR

- Office: 503.493.7854
- Cell: 503.348.3781
- madams13@wmi.com

Benjamin Arata - PNW/BC Area Project Manager - WMI - Portland, OR

- Office: 503.493.7832
- barata@wmi.com

Nicole Bisacchi - WMI - Surprise AZ

- 602.763.4385
- nbisacch@wmi.com

Cody Cowgill, P.E. - Site Engineer, El Sobrante Landfill- WMI - Corona, CA

- Office: 951.277.5106
- Cell: 951.415.4194
- ccowgill@wmi.com

Mike Loupas - Golden Vertex Corp. Bullhead City, AZ

- 928.234.1127
- mike.loupas@goldenvertexcorp.com

Terry L. Grayson - Senior Construction Manager WMI - Anderson, CA

- Cell: 916.508.5973
- tgrayso2@wmi.com

Michael Heinsteinstein, P.E. PNW/BC - Area Engineer WMI - Portland, OR

- Cell: 307.461.1577
- Office: 503.331.2264
- mheinste@wmi.com

Adrian D. Reisdorff, P.E. - Engineer II WMI- Portland, OR

- Office: 503.331.2267
- Cell: 503.313.2604
- areisdor@wmi.com

David Rettell - Engineering Manager WMI

- 503.894.3046
- drettell@wmi.com

Glenn Roycroft - Senior Engineer WMI - Livermore, CA

- 415.497.1621
- groycroft@wmi.com

Christian Sapong - P.E. Engineer WMI - Sun Valley, CA

- 562.257.8397
- csapong@wmi.com

Scott Sumner - Manager of Engineering WMI

- Office: 714.328.8816
- ssumner@wmi.com

Kevin A Walker - Construction Manager WMI - Sun Valley, CA

- Office: 508.889.4990
- kwalker7@wmi.com

Jessica Walko - WMI - Marana, AZ

- jwalko@wmi.com

MUSTANG EXTREME ENVIRONMENTAL SERVICES CONTACT LIST

Chris Thomas, Chief Executive Officer

- 404.713.1881

Scott Jones, Chief Financial Officer

- 713.494.6070

Gregg Abney - General Manager, Environmental Lining

- 225.907.5487
- gabney@mustangextreme.com

Robert Cimarolli - Business Development Manager, Environmental

- 412.334.4936
- rcimarolli@mustangextreme.com

Amy Hawkinberry - Credit/Collections

- Office: 681.214.2522
- ahawkinberry@mustangextreme.com

Office: 817.441.1235

mustangextremem.com

sales@mustangextreme.com

estimations@mustangextreme.com



