

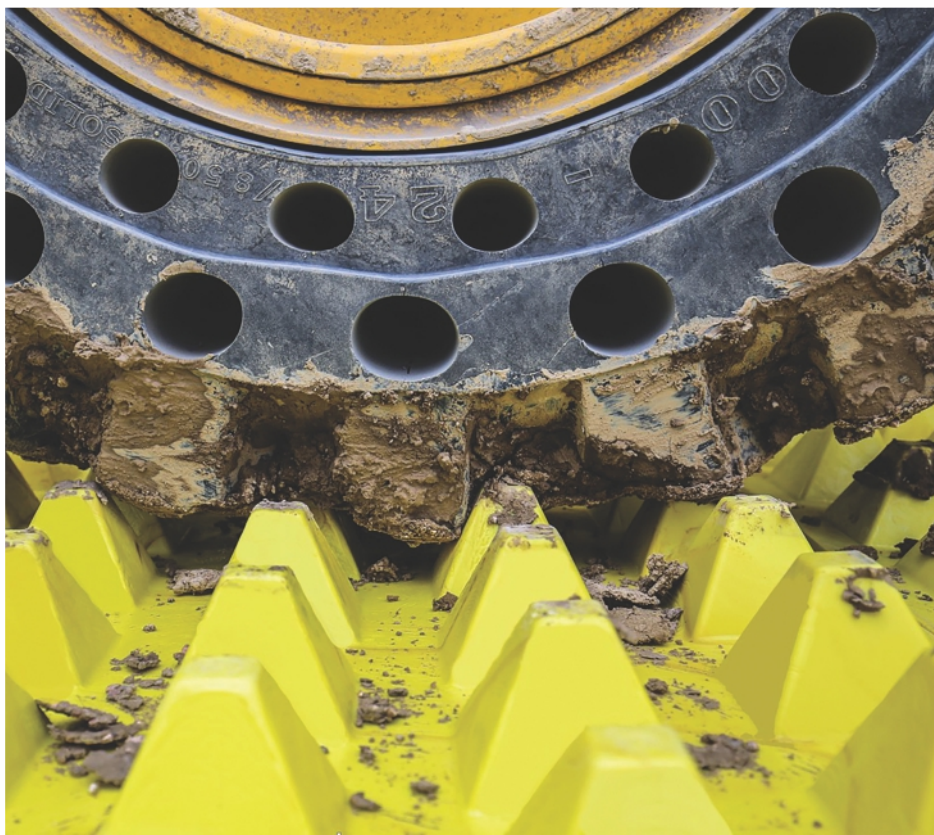
Foreign Object Debris System (FODS)

FODs are an innovative new matting system designed to more effectively remove debris from vehicles tires than standard solutions such as rocks, shakers, and steel plates.

FODs help eliminate the tracking of mud and sediments outside of work sites. Their construction from high strength material also mitigates ground disturbance during usage which helps resist soil erosion. They are easily cleaned via washing or sweeping so they will not transport contaminants between sites.

Most standard entrances will save up to three dump trucks worth of rock on initial install by utilizing FODs. This makes them ideal for construction, airports, government, military, oil and gas, roads and bridges, renewable energy telecommunications, national parks, storm water, pipeline, utilities, mining, agriculture and more.

FODs are 100% recyclable, made in the USA, and can be reused for many years.



THE MUD STOPS HERE
THE ENVIRONMENTAL TRACKOUT SOLUTION

mustangextreme.com



FODS TRACKOUT CONTROL

FODS MATS OFFER SUPERIOR BENEFITS:

- Creates an instant construction entrance over virtually any type of surface including asphalt, concrete, turf, marshy area, sand, mud, even ground, uneven ground, and similar
- Will not become clogged with debris or embedded into soft ground
- Protects ground when placed on top of surface unlike conventional SCE's (Stabilized Construction Entrance)
- Easily transported from site to site in minutes
- Creates an easily recognizable entrance for vehicles to see day or night
- Mats will not warp, even when installed over uneven terrain
- Superior alternative to rocks, shakers, steel plates
- Supports weights up to 80 tons
- Chemically resistant to acids, oils, brake fluid, etc
- Easily cleaned and put back in service within minutes
- Manufactured in the USA
- Easily stored when not being used
- 15 times more abrasion resistant than steel
- Years of reusable performance
- 100% recyclable

FODS - THE ENVIRONMENTAL TRACKOUT SOLUTION

Ideal for construction, airports, government, military, mining, agriculture, forestry, renewable energy, oil and gas, telecommunications, national parks, storm water, roads and bridges.

	FODS	ROCKS
Minimal clogging	Yes	No
100% Solid and uniform construction	Yes	No
Recyclable	Yes	No
Easily Cleaned	Yes	No
Reusable/transportable	Yes	No
Does not absorb chemicals and oils	Yes	No
Protects ground underneath	Yes	No
Supports 60,000 PSF	Yes	Yes
Easily seen from street	Yes	No
Spans over uneven ground	Yes	Yes
Non-destructive installation	Yes	No
Shakes vehicles when crossing over	Yes	No

FODS Mat

- Mat size is 12' wide by 7' long and pyramids are 3" tall.
- It will take 10 mats to make a system for a standard 12' x 70' entrance used on most construction sites. Various jurisdictions require different lengths so this may be less or more depending where they will be used.
- Mats weigh approximately 430lbs.
- Mats can be anchored to the ground and fastened together.
- Mats are made out of HMWPE (High Molecular Weight Polyethylene).
- Mats are yellow in color.

STABILIZED CONSTRUCTION ENTRANCE (SCE)

12' wide by 70' long of appropriate aggregate. Location where SCE is to be located needs to be excavated 6" down in depth, a geotextile erosion control fabric placed down, with aggregate placed on top.

Individual jurisdictions have specifications that they require which can increase or decrease depth, width, length, size of aggregate, and similar. After SCE removal, topsoil must be added back to disturbed area, graded, and re-seeded.



24/7: (866) 408-2837
 Office: (817) 441-1235
sales@mustangextreme.com
mustangextreme.com